



Future Tech Systems, Inc

www.future-tech.com

User Applications

Envision is widely used by business consultants and analysts in major organizations for:

- ◆ Enterprise Architecture
- ◆ Operational Risk
- ◆ Strategic Planning
- ◆ Requirements Management
- ◆ Systems architecture definition, analysis, and design
- ◆ Documentation of processes, systems and organizations.
- ◆ Process improvement
- ◆ Workflow design and implementation
- ◆ Data and network modeling
- ◆ Graphical executive information systems
- ◆ Model based training

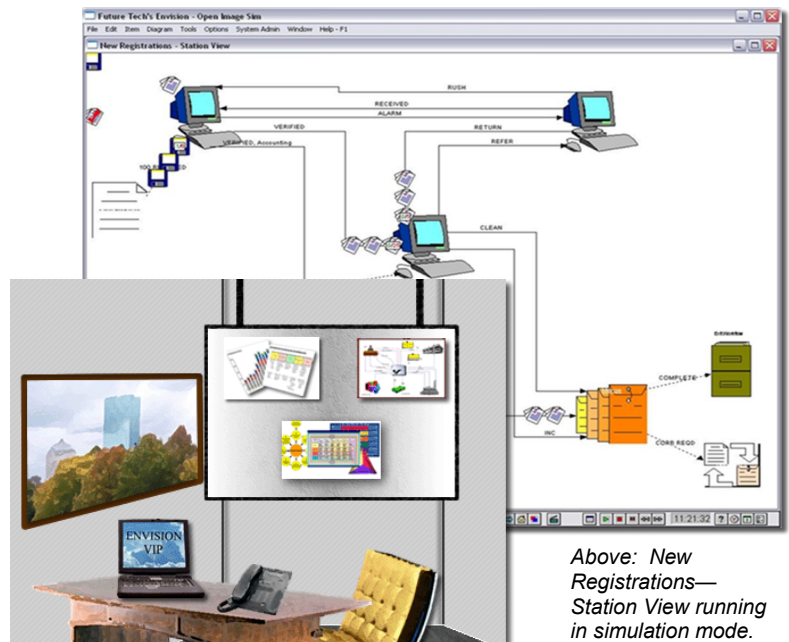
Envision user community includes:

- ◆ Social Security Administration
- ◆ Best Buy
- ◆ Motorola
- ◆ The US Navy
- ◆ The Canadian Navy
- ◆ JP Morgan/CHASE Manhattan Bank
- ◆ West Merchant Bank Limited
- ◆ Bank of Montreal Group of Companies
- ◆ AT&T
- ◆ Manulife Financial
- ◆ Nationwide
- ◆ Several Major Accounting Firms

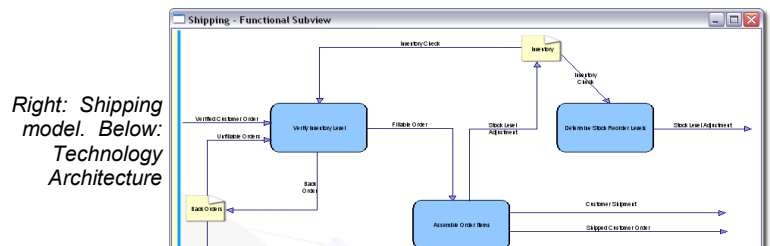
Highly recommended by leading industry consultants:

- ◆ Insurance Industry
- ◆ Banking Industry
- ◆ Retail Industry
- ◆ Government Project Planning: USA and France
- ◆ Leading Accounting Firms
- ◆ Leading Independent Consultants

Sample models from various user applications.



Above: New Registrations— Station View running in simulation mode.



Right: Shipping model. Below: Technology Architecture

