



View your data on the web

Envision Models can now be published to the web with a single click of the mouse. Administrators can now easily publish diagrams, item data, reports, and matrices easily with Envision's new *Save as Web Page* feature.

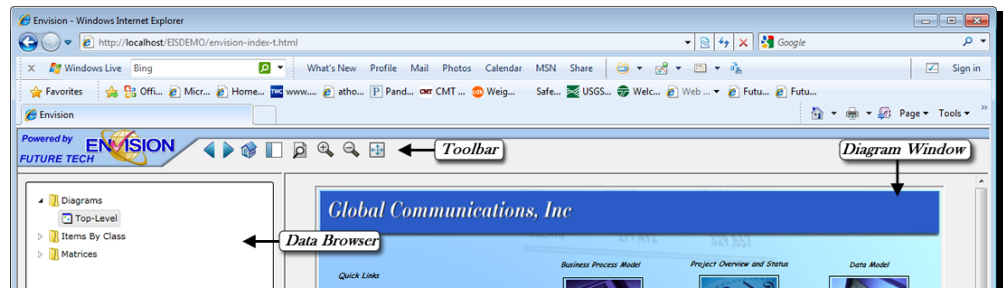
This new feature offers an easy to use interface that allows the user to create fully linked, read-only web content. Online users will be able to view and traverse all diagrams. Diagram behavior is similar to that of the native Envision environment. Double click behavior and linkages are supported, as well as reports, matrices, and selected right mouse button operations.

Make your published diagrams even more powerful and increase functionality with the addition of the Envision Web-Plugin. This add-on to the standard Envision web publishing gives users the following additional features:

- ✓ Envision Data Browser for quickly locating and viewing, diagrams, items by class, matrices, and documents.
- ✓ Access to all published diagrams, item properties, matrices, documents, and linked associations.
- ✓ Sub-view previews are supported for Double Click Menus and Right Button Operations.
- ✓ A powerful Search Feature allows quick lookup of items, item references on diagrams, and contextual keyword searches of diagrams, items and reports.

Requirements:

- ✓ Windows 7, Vista, Win XP (All with the latest service patches)
- ✓ Internet Explorer 6.0+
- ✓ MSXML 4.0
- ✓ Windows Installer (latest version)



Search for: Item Name Customer Order Search Show Filename

Searching for "Customer Order" in "ItemName":

- Customer Order [Data]
- Customer Order Number [Data]
- Customer Order Status [Data]
- Customer Order Status Inquiry [Data]
- Check Customer Order Status [Process]
- Credit Customer Order [Data]
- Invoiced Customer Order [Data]
- Post Customer Order [Data]
- Receive Customer Order [Process]
- Reconcile Customer Order [Process]
- Shipped Customer Order [Data]
- Verified Customer Order [Data]
- Verified Customer Credit Order [Data]

Search returned 13 results.

Item Name [Class]	Global Communications, Inc. [Process]
Attribute	Value
Budget \$ Used	.004
Budget Actual	4
Budget Plan	100,000.00
Business CSFs	Owner Satisfaction
Business Function	Management
Cost Labor	54
Cost Materials	30.75
Cost Overhead	18
FTE Actual	.75
FTE Budget	1.0
FTE Skill Level	Advanced Degree - Mgmt
Process Description	This is a sample small business enterprise model. The business is a hypothetical mail order operation. Several aspects of this business are included in this example. Underlying this process are a functional subview of the business operations and an overall data model subview. An orthogonal organizational and personnel subview is also available.
Process ID	1.0
Process Security	Confidential
Process Structure	Partitionable