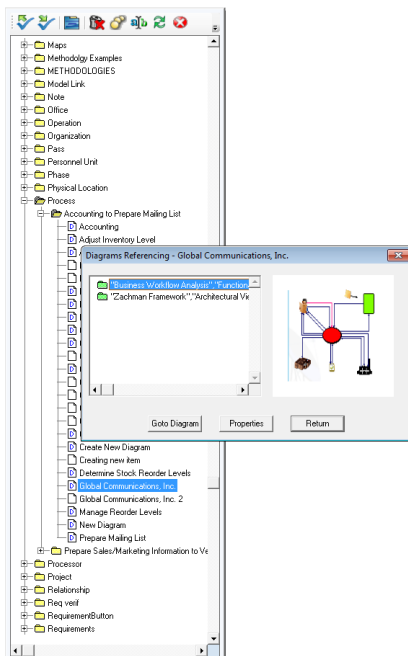


Accessing Your Repository Data

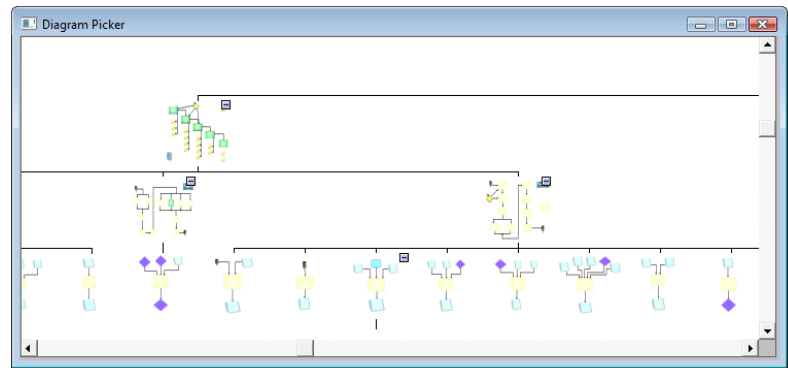
Tired of shuffling endless sheets of printed diagrams, graphs and spreadsheets looking for the right information? **Envision** now makes finding the information you want quick and easy with features like the *Data browser*, *Matrix Analysis*, *Diagram Tree*, and a user interface with unlimited concurrent views.



Above: Data Browser and Diagram Reference dialog box showing all occurrences of Customer Order

Data Browser

- ✓ View all repository items in a structured directory tree.
- ✓ View all references of an item throughout the project.
- ✓ Make changes to items
- ✓ Drag and Drop items directly from the Data Browser onto dia-



Above: Diagram Picker

Diagram Picker

- ✓ View diagram thumbnails in their appropriate hierarchy.
- ✓ Double click on a thumbnail to open a diagrams in a separate window
- ✓ Jump between diagrams or view them concurrently in multiple windows.

Matrix Analysis

- ✓ Define custom Item/Attributes, Connections or Relational Matrices
- ✓ Use Item/Attributes matrices to do quick data analysis and entry
- ✓ Connections matrices (right) show the flow of data between objects or connectors
- ✓ Relational matrices define any type of traditional (CRUD) or custom relationships between repository items.

Connections Class: Data	Diagram	[Unnamed]	[Unnamed]	Accounting	Accounting	Adjust Inventory Level
[Unnamed]		1/0	1/0			
Back Order	2/2					
Bank Statement	6/6			1/0	1/0	
Credit Check	8/8					
Credit Customer Order	6/6					
Credit Verification	8/8					
Current Mailing List	8/8					
Customer List	6/4					
Customer Order	10/9					
Customer Order Status	7/6					
Customer Order Status Inquiry	5/5					
Customer Shipment	6/6					

Above: Connections Matrix generated by Envision